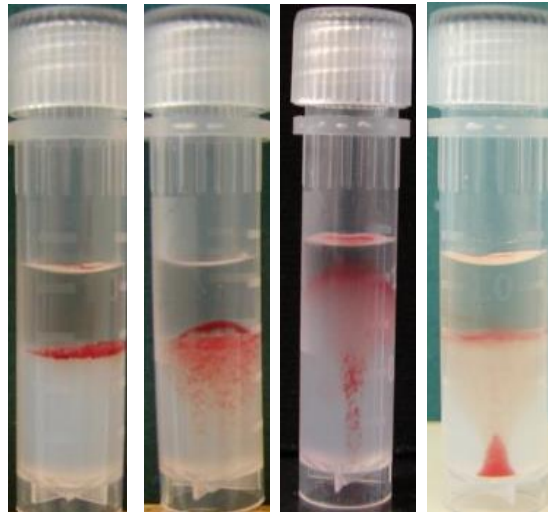


# RapidVet<sup>®</sup>-H

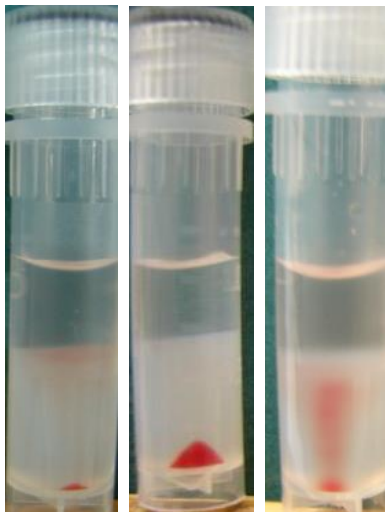
*Companion Animal CROSSMATCH*

## Crossmatch Photo Identifier



### **POSITIVE** (Incompatible donor/recipient)

A positive test is considered any tube demonstrating red blood cells at or near the top of the gel column after centrifugation. In weak agglutinations, the cells may end up at the bottom of the tube in a conical or bell-shaped configuration. In this instance, the peak of the reaction will extend more than halfway up the gel column. **DO NOT TRANSFUSE USING THIS DONOR.**



### **NEGATIVE** (Compatible donor/recipient)

A negative test is considered any tube where the vast majority of red blood cells are at or near the bottom of the gel column after centrifugation and no firm line of agglutinated cells remains at the top of the gel. **IT IS UNLIKELY THAT A SIGNIFICANT REACTION WILL RESULT FROM A TRANSFUSION USING THIS DONOR.**

Rev. 12/2017

**dms**laboratories, inc.

2 Darts Mill Road, Flemington, NJ 08822

Tel.: (908) 782-3353 or (800) 567-4367 in U.S. and Canada; Fax: (908) 782-0832

RapidVet is a registered trademark of **dms**laboratories, inc.